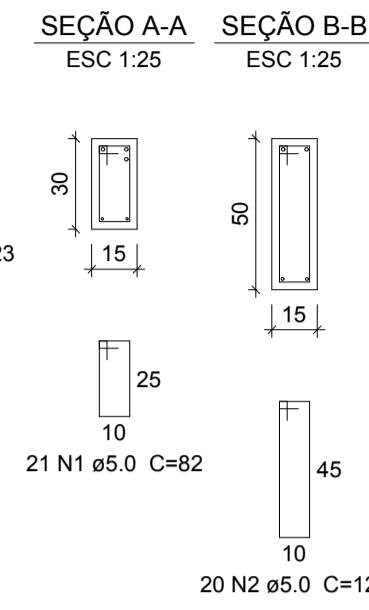
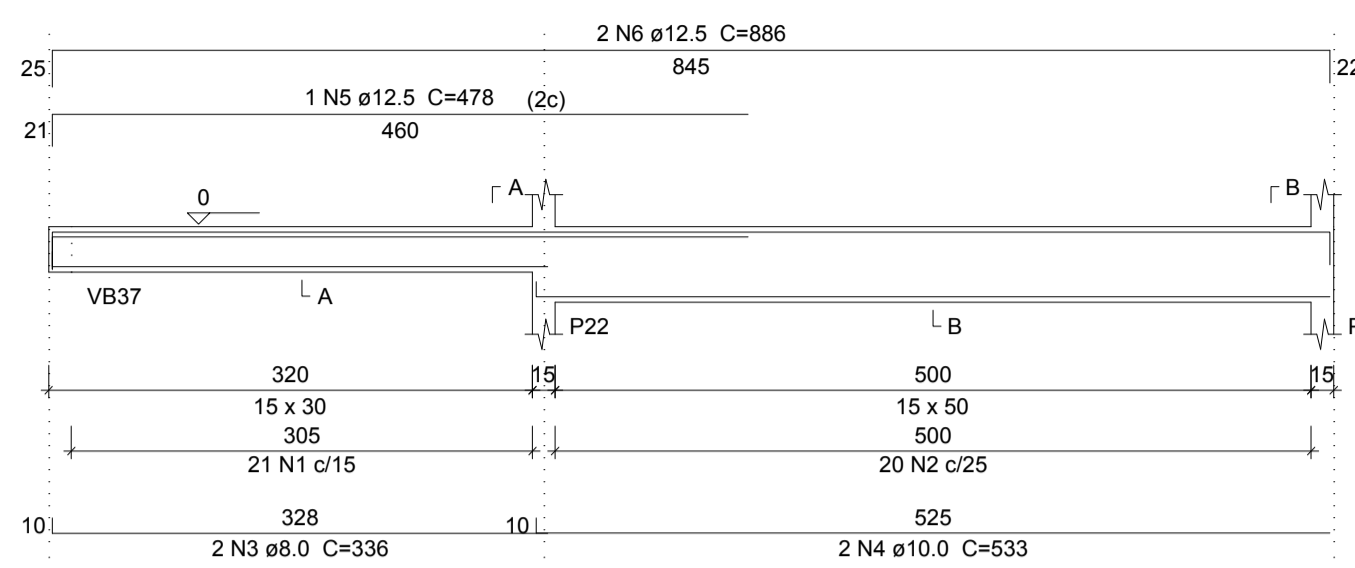
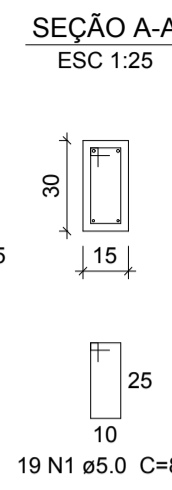
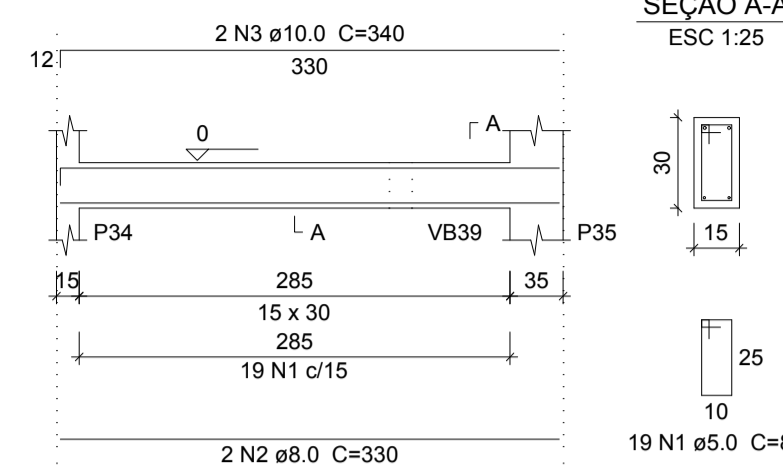


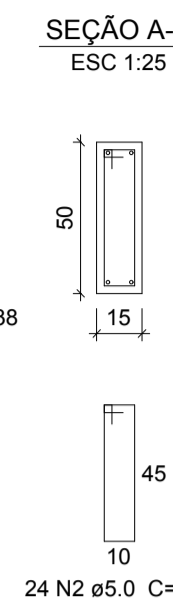
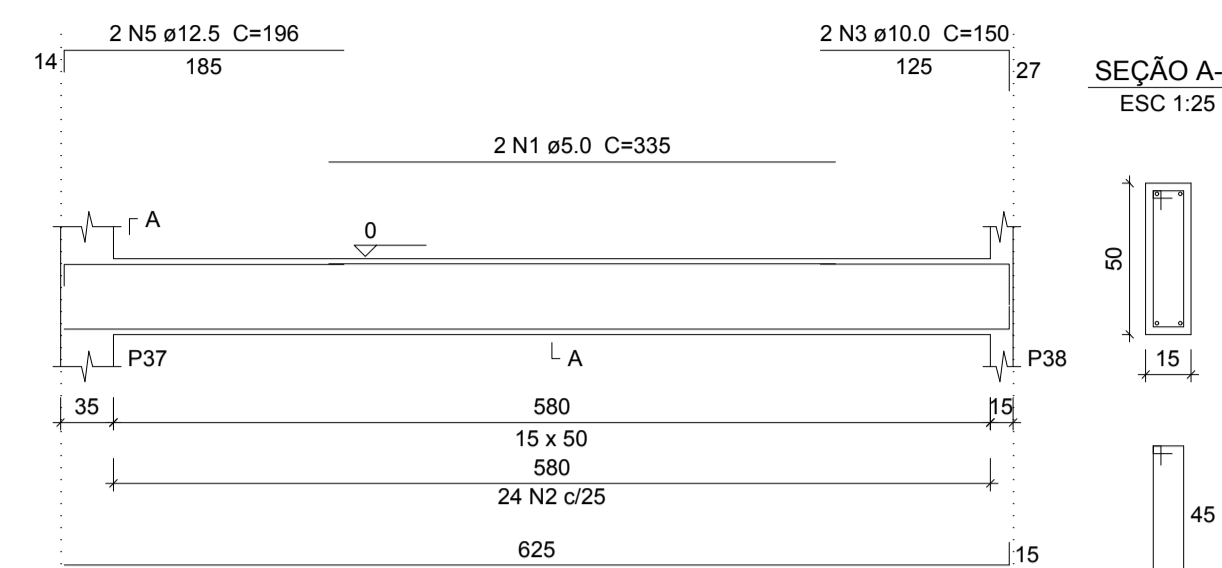
VB7
ESC 1:50



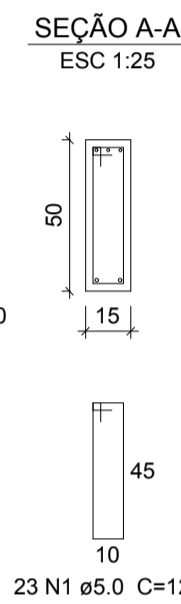
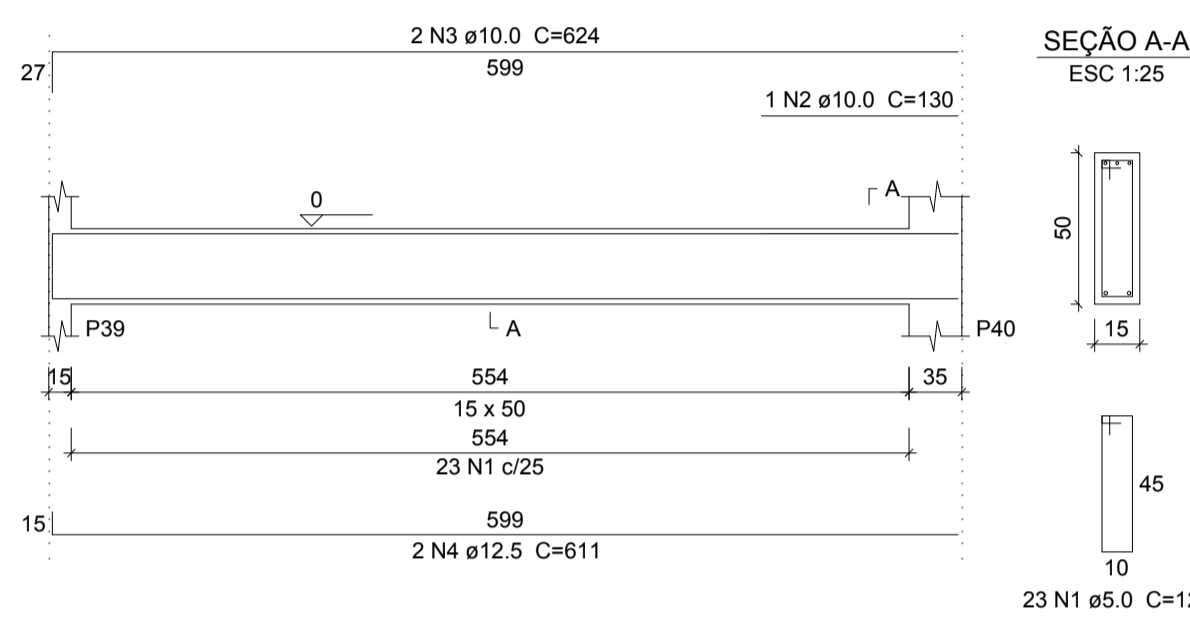
VB8
ESC 1:50



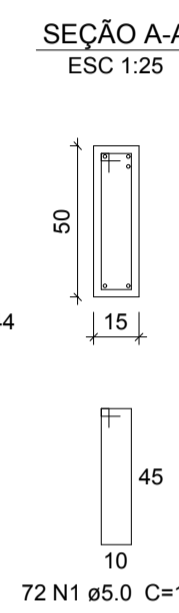
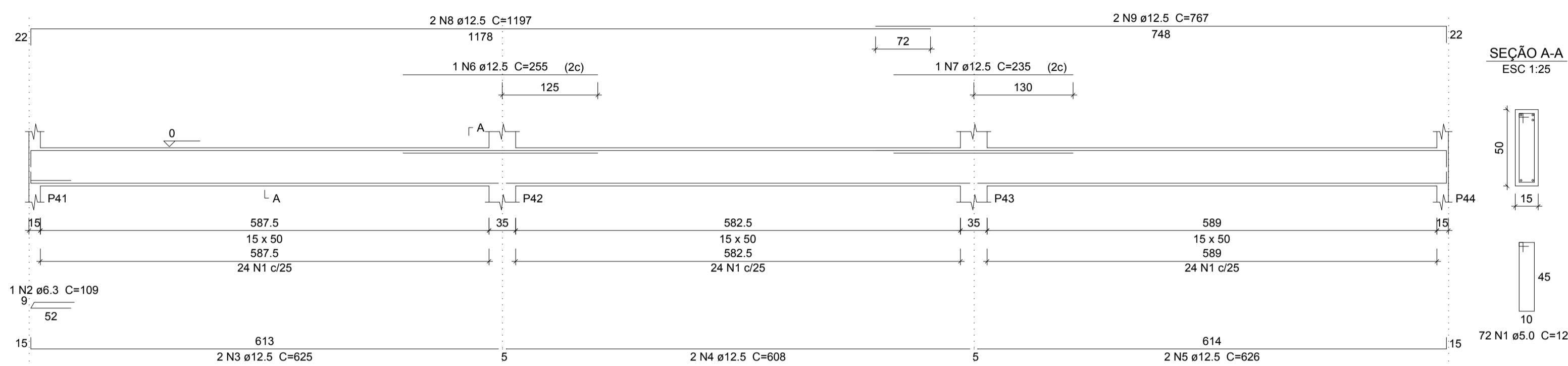
VB9
ESC 1:50



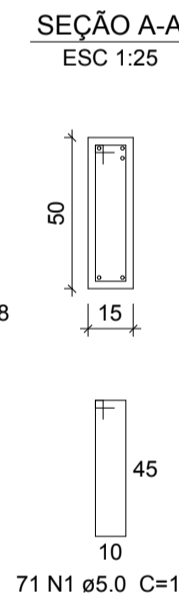
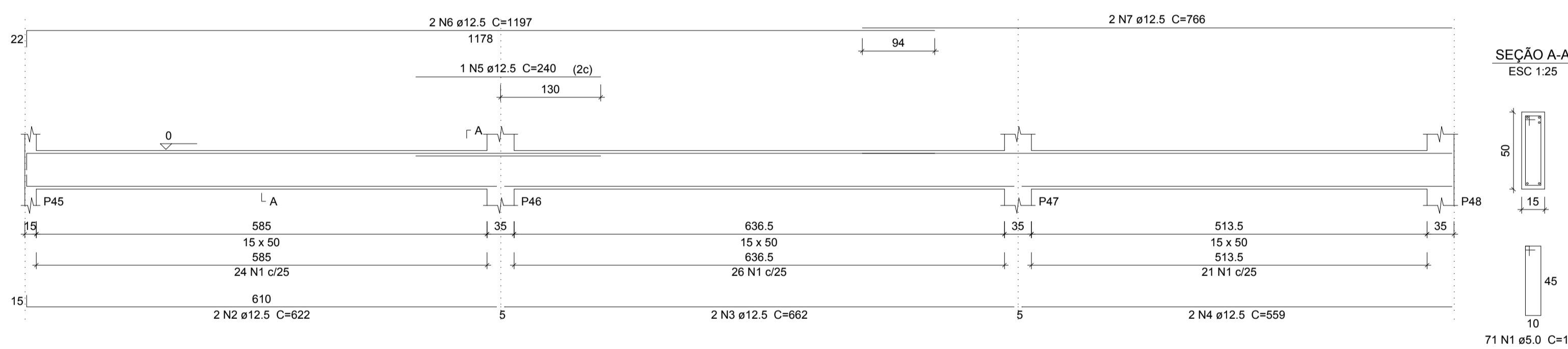
VB10
ESC 1:50



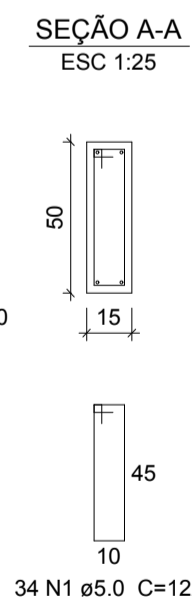
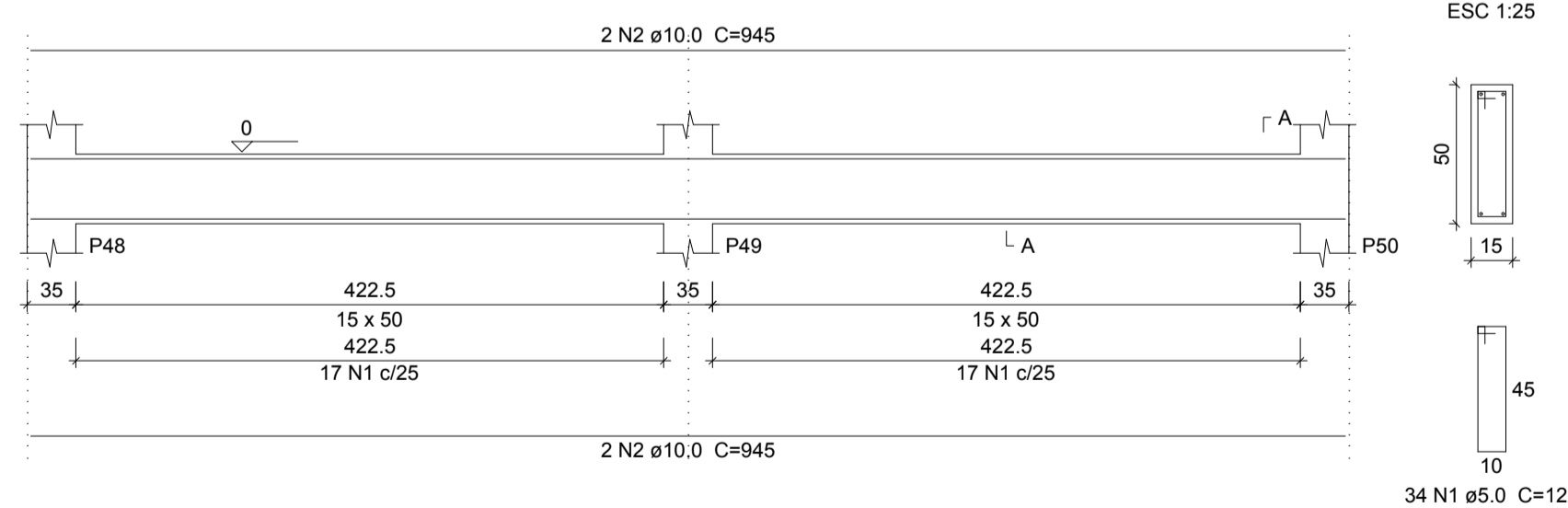
VB11
ESC 1:50



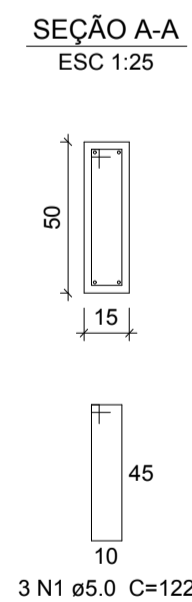
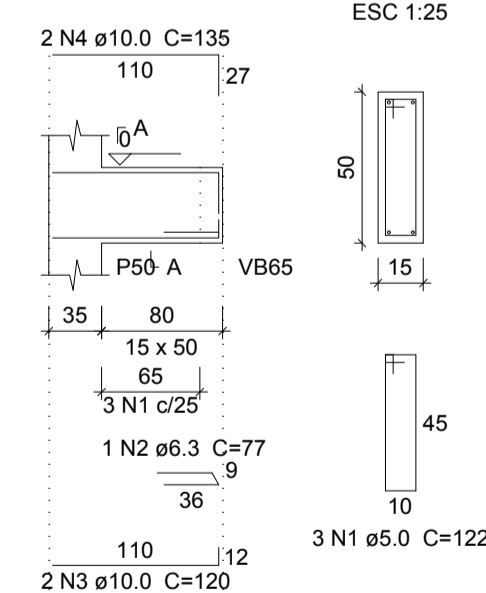
VB12
ESC 1:50



VB13
ESC 1:50



VB14
ESC 1:50



Relação do aço

ELEMENTO	AÇO	N	DIAM	Q	UNIT (cm)	C.TOTAL (cm)
VB7	CA80	1	5.0	21	82	1722
	CA60	2	5.0	20	122	2440
	CA50	3	8.0	2	336	672
	CA50	4	10.0	2	533	1066
	CA50	5	12.5	1	478	478
VB8	CA60	1	5.0	19	82	1558
	CA50	2	8.0	2	330	660
	CA50	3	10.0	2	340	680
	CA60	1	5.0	2	335	670
	CA60	2	5.0	24	122	2928
VB9	CA50	3	10.0	2	150	300
	CA50	4	12.5	2	637	1274
	CA50	5	12.5	2	196	392
	CA60	1	5.0	23	122	2806
	CA50	2	10.0	1	130	130
VB10	CA50	3	10.0	2	624	1248
	CA50	4	12.5	2	611	1222
	CA60	1	5.0	72	122	8784
	CA50	2	6.3	1	109	109
	CA50	3	12.5	2	625	1250
VB11	CA50	4	12.5	2	608	1216
	CA50	5	12.5	2	626	1252
	CA50	6	12.5	1	255	255
	CA50	7	12.5	1	235	235
	CA50	8	12.5	2	1197	2394
	CA50	9	12.5	2	767	1534
	CA60	1	5.0	71	122	8662
	CA50	2	12.5	2	622	1244
	CA50	3	12.5	2	662	1324
	CA50	4	12.5	2	559	1118
VB12	CA50	5	12.5	1	240	240
	CA50	6	12.5	2	1197	2394
	CA50	7	12.5	2	766	1532
	CA60	1	5.0	34	122	4148
	CA50	2	10.0	4	945	3780
VB13	CA60	1	5.0	3	122	366
	CA50	2	6.3	1	77	77
	CA50	3	10.0	2	120	240
VB14	CA50	4	10.0	2	135	270

Resumo do aço

AÇO	DIAM	C.TOTAL (m)	PESO (kg)
CA50	6.3	1.9	0.5
CA50	8.0	13.4	5.3
CA50	10.0	77.2	47.6
CA50	12.5	211.3	203.5
CA60	5.0	340.9	52.5
PESO TOTAL			
CA50		256.8	
CA60		52.5	

Vol. de concreto total (C-25) = 5.2 m³
Área de forma total = 80.13 m²



DETALHE ESTRIBO LIGAÇÃO VIGA E PILAR
S/ESCALA

TIPO DA OBRA:	REESTRUTURAÇÃO DA ESCOLA ESTADUAL JOSÉ ALVES BEZERRA		
PROPRIETÁRIO CPF OU CGC:	PREFEITURA MUNICIPAL DE PORTO DOS GAÚCHOS		
LOCAL E INSCRIÇÃO CADASTRAL:	Endereço: Av. Guilherme Meyer Município de Porto dos Gaúchos - MATO GROSSO		
AUTOR DO PROJETO: CREA:	Evelin Luani Montagna MT 039125		
RESPONSÁVEL TÉCNICO: CREA:	Evelin Luani Montagna MT 039125		
ESCALA: INDICADA	DATA: OUT/2019	ASSUNTO: PROJETO ESTRUTURAL; PLANTA DE ARMAÇÃO DAS VIGAS VB7,VB8,VB9,VB10,VB11,VB12,VB13,VB14	FOLHA Nº 27/45
E S T A T I S T I C A			
ÁREAS: VER PROJETO ARQUITETÔNICO	% DE OCUPAÇÃO		COEF. APROVEIT. Nº DE PISOS
	TÉRREO	DEMAIS PAV.	
			01